



 BEACON HEALTH SYSTEM

2015
ECONOMIC IMPACT

What is ECONOMIC IMPACT?

A viable economy is synonymous with a healthy community — a factor known to affect not only the capability of workers and consumers, but also location decisions of both businesses and households.

To show our value to the community, Beacon Health System commissioned a series of studies showing our impact on the local economy both through our direct revenues and through related aspects of the economy.

This report highlights the contributions of Elkhart General Hospital, Memorial Hospital, Beacon Medical Group and the overall physician sector in the ongoing development of our local economy. Beacon Health System is the parent organization for the two hospitals as well as Beacon Medical Group.

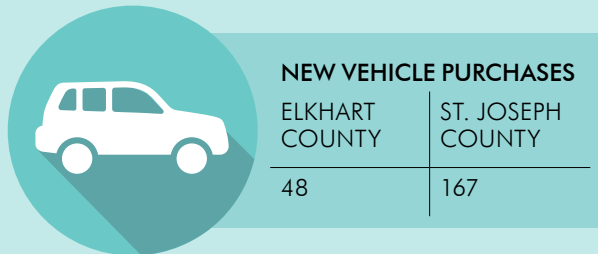
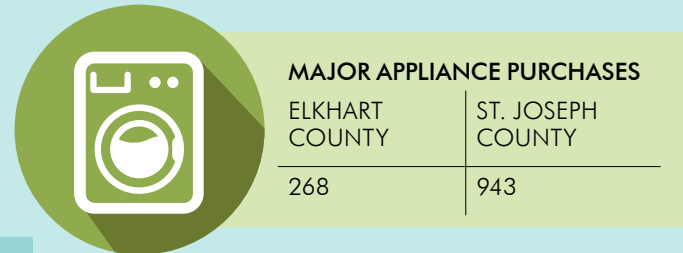
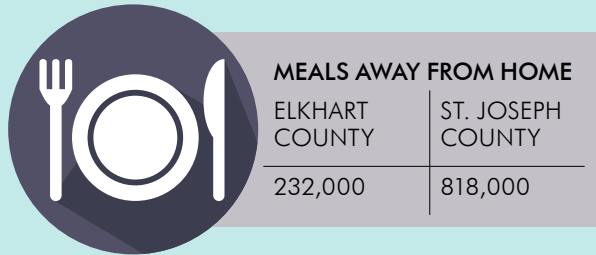
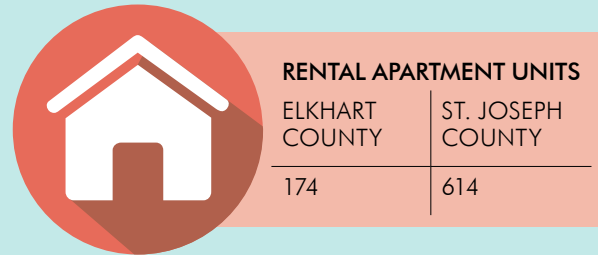
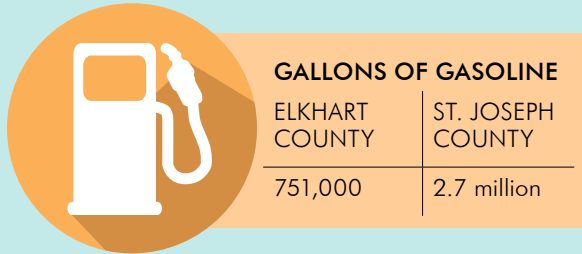
Beacon Health System Hospitals and Physicians

Elkhart General and Memorial Hospital have provided care throughout north central Indiana and southwestern Michigan for more than 100 years. Beacon Medical Group, with over 200 physicians representing over 35 specialties, is the premier physician group in our region. These physicians associated with Elkhart General and Memorial attract patients from outside Elkhart and St. Joseph counties, enlarging the counties' income and full-time employment. Non-affiliated physicians likewise add to the large infusion of income and jobs in our communities, as well as provide an additional depth and scope of medical services in our communities.

Learn More

Beacon Health System commissioned QUANTECH Research Associates to conduct these studies, which are available in their entirety at [ADD LINK](#).

Estimate of Example Consumer Expenditures Resulting from Economic Development Impacts



Estimates based on 2013 figures.

Summary of
KEY INFORMATION

\$51,100,000

Elkhart General Hospital directly and indirectly accounts for 1,042 full-time jobs and \$51.1 million in new income/economic activity in Elkhart County.

\$187,000,000

Memorial Hospital of South Bend directly and indirectly accounts for 3,215 full-time jobs and \$187 million in new income/economic activity in St. Joseph County.



In 2013,
Elkhart General
and Memorial
provided over
\$80 million
in community benefits.

Economic Impact of ELKHART GENERAL HOSPITAL

The impact of Elkhart General Hospital can be felt in many ways, including stable jobs and just under \$20 million in compensation for 1,215 employees who live in Elkhart County, millions of dollars in charity care, and support for local suppliers. Elkhart General has 381 Elkhart County physicians on staff.

On the basis of operations for 2013, Elkhart General accounts for a yearly economic development impact in Elkhart County of \$5.1 million in area income (or \$119.3 million in revenue/sales) and the equivalent of 1,042 full-time local jobs. These are dollars and jobs that would not otherwise exist locally in the absence of Elkhart General Hospital.

Government Sector

The 989 additional jobs resulting from Elkhart General Hospital's economic impact added 1,722 people to the area. These added individuals helped finance \$6.1 million of local government expenditures leading to 54 additional government jobs in the community.

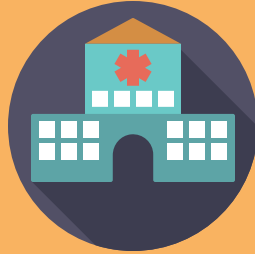
Tax Impact

Hospital associates paid nearly \$35 million in state, local and federal taxes.





Employing 1,953 people in 2013, Elkhart General Hospital had 51,574 patient days and net revenues exceeding **\$260.2 million**.



About Elkhart General Hospital

The hospital is not-for-profit with its main hospital campus located in the city of Elkhart beside the beautiful St. Joseph River. Elkhart General's full-service, 325-bed hospital is comprised of over 300 physicians representing more than 30 medical specialties, and nearly 2,000 employees serve in nursing, technical, administrative and support capacities.



Economic Impact of MEMORIAL HOSPITAL OF SOUTH BEND

Memorial Hospital provides stable jobs and compensation topping \$133 million to county residents for some 2,321 employees, helps support hundreds of local supplier firms, provides millions of dollars worth of charity care and serves as a medical treatment center for 751 area physicians. Total employment of 2,818 ranks the hospital as the second largest employer in St. Joseph County.

Based on operations in 2013, Memorial accounts for a yearly economic development impact in the St. Joseph County area economy, considering both the multiplier effect and an average year of significant construction activity, of \$187 million in area income (or, \$397.8 million in new revenues/sales) and the equivalent of 3,215 full-time local jobs. These are dollars and jobs that would not otherwise exist locally in the absence of Memorial Hospital.

Government Sector

The 3,215 additional jobs resulting from Memorial's economic impact added 6,591 persons to the area's population base. Many of these persons own property and pay property taxes, thereby supporting local government services. In total, these 6,591 added individuals helped finance \$23.2 million of local government expenditures leading to 206 additional local government jobs in the community.

Tax Impact

Memorial Hospital's employees paid nearly \$53 million in federal, state and county taxes.





Employing 2,818 associates in 2013, Memorial Hospital was St. Joseph County's second largest employer. Patient days served in 2013 totaled 103,191, and net revenues analyzed in this study exceeded **\$438.9 million**.





About Memorial Hospital

Memorial Hospital of South Bend, which dates back to 1893, is a 526-bed, not-for-profit, community-owned hospital. In addition to the traditional hospital operation, Memorial operates a dedicated children's hospital, a freestanding fitness center, an interactive children's health museum, a Family Medicine Residency Program, Sports Medicine Fellowship Program and a Health Foundation where donations to the organization are processed.

Economic Impact of BEACON MEDICAL GROUP

Beacon Medical Group is the largest, most integrated physician group in the region, featuring more than 50 practice locations for primary and specialty care, three MedPoint urgent care centers and three MedPoint express retail clinics. With more than 200 physicians and 80 mid-level providers representing more than 35 specialties, Beacon Medical Group offers world-class care to communities across northern Indiana and southwest Michigan.

The dollars of income and jobs in both the physician sector and throughout the total broader local economies **would not exist except for these Beacon Medical Group physicians attracting new patients from outside the counties where Elkhart General and Memorial are located.** Virtually every business and household in the community would be affected by this new income and employment.





The effect of Beacon Medical Group
physicians on Elkhart County:

\$3,824,701
total labor income



61 jobs

The effect of Beacon Medical Group
physicians on St. Joseph County:

\$15,712,794
total labor income



254 jobs

